



SAN ANTONIO  
RIVER AUTHORITY

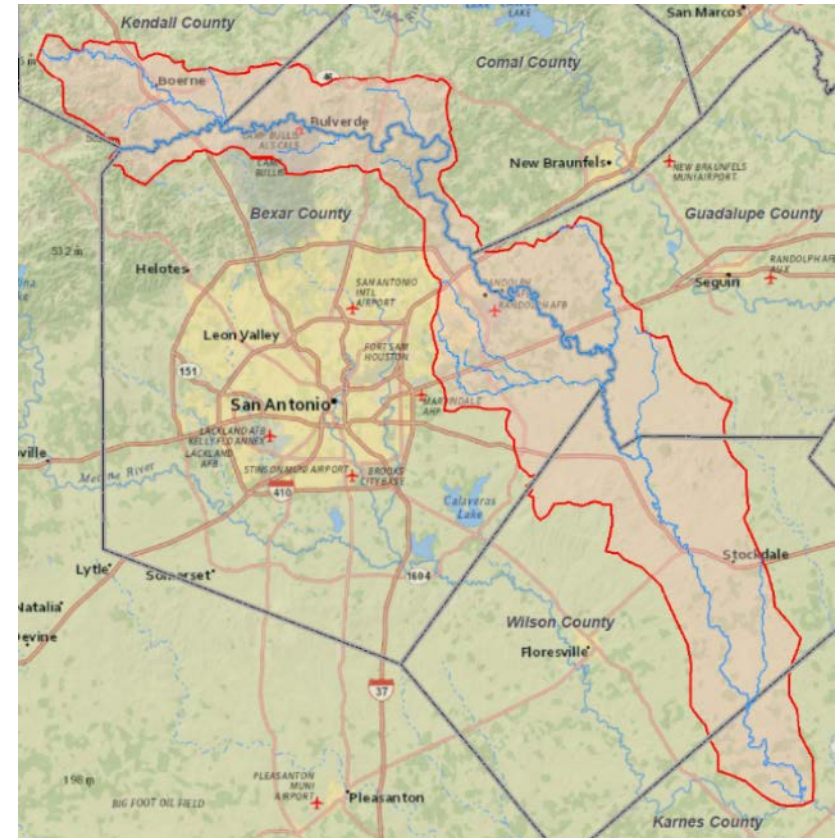
Leaders in Watershed Solutions

# Cibolo Creek Watershed Master Plan

May 18, 2017

# Study Objectives

- Identify areas with:
  - ☐ High flood risk
  - ☐ Water quality concerns
  - ☐ Stream restoration potential
  - ☐ Park opportunities
- Develop multi-purpose solutions



# Current Status

Study Phase	Start	Finish
1: Data Collection	March 2014	June 2015
2: Analysis and Identification	June 2015	June 2017
3: Implementation Plan	June 2017	Sept 2017



# Flood Risk

## Studied Streams

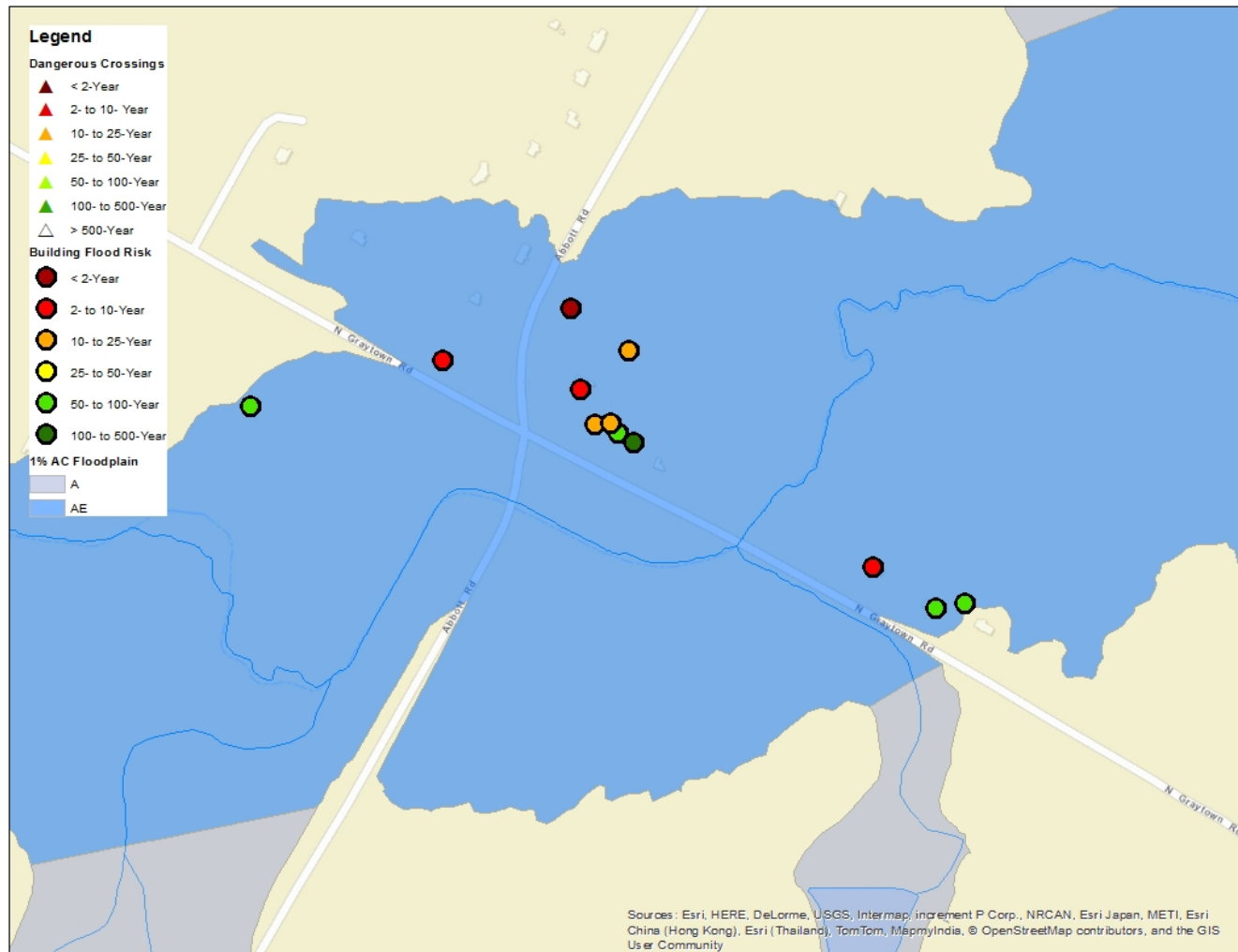
- ☐ Cibolo Creek
- ☐ Balcones Creek
- ☐ Meusebach Creek
- ☐ Martinez Creek
- ☐ Tributary F to Martinez Creek
- ☐ Escondido Creek
- ☐ Salitrillo Creek
- ☐ Woman Hollering Creek

## 1% Annual Chance Flood Risk

- ☐ 105 Structures
- ☐ 64 Crossings



# Graytown Rd – Flood Risk



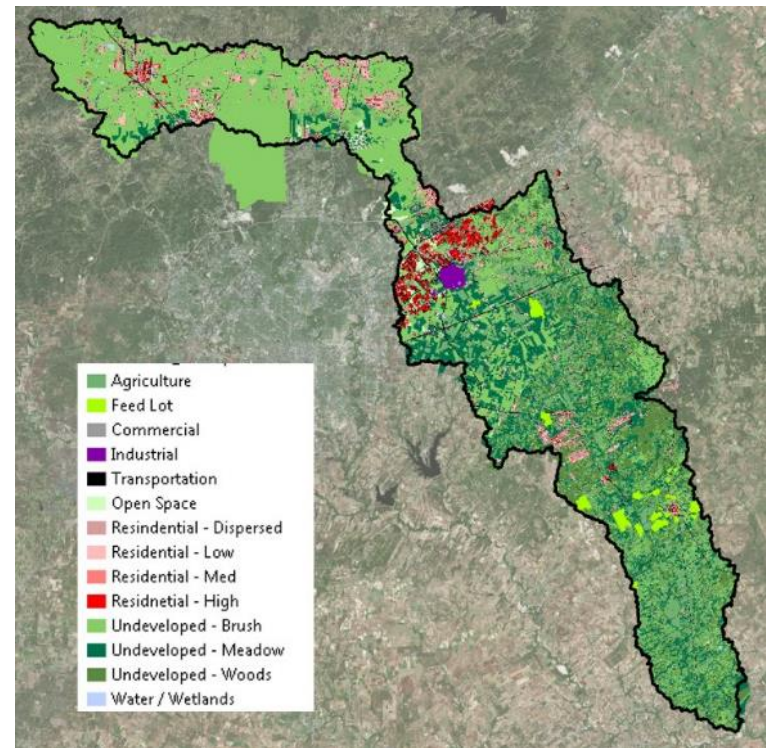
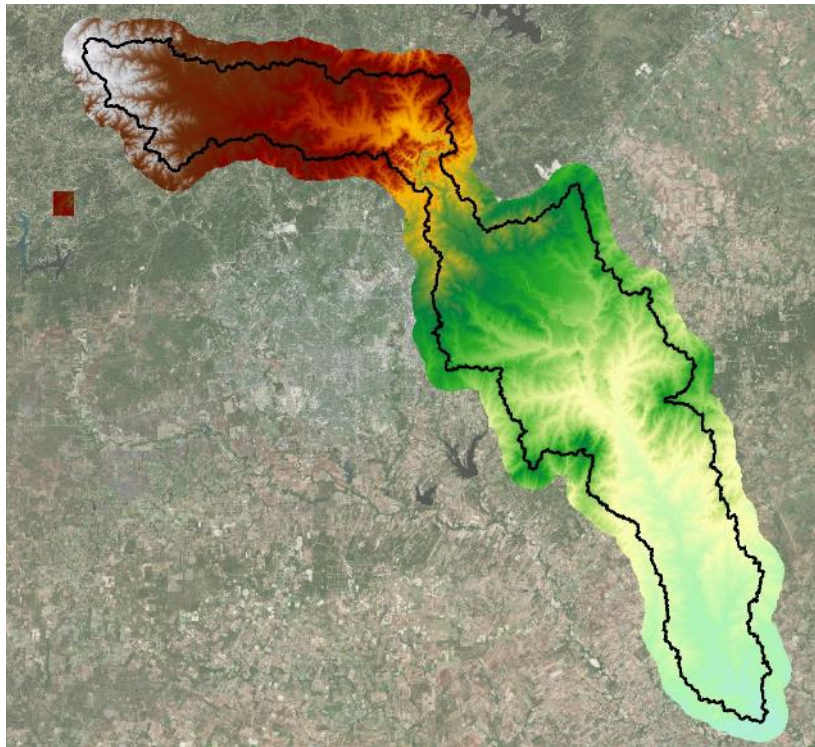
# Water Quality

- HSPF model
- Present and Future Land Use approximations
- Finalizing model now
- Will test BMPs in next phase



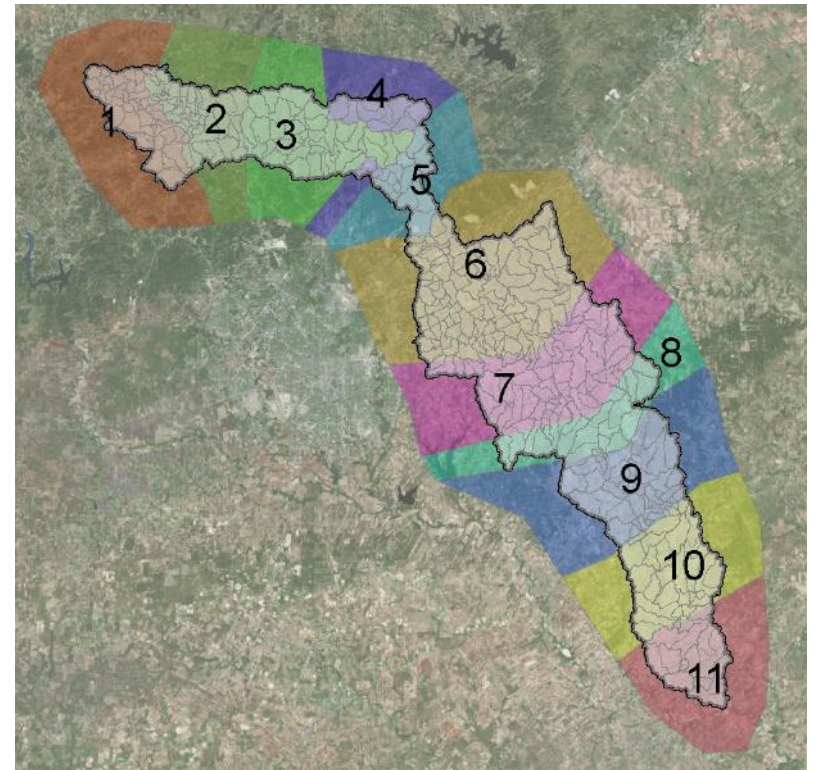
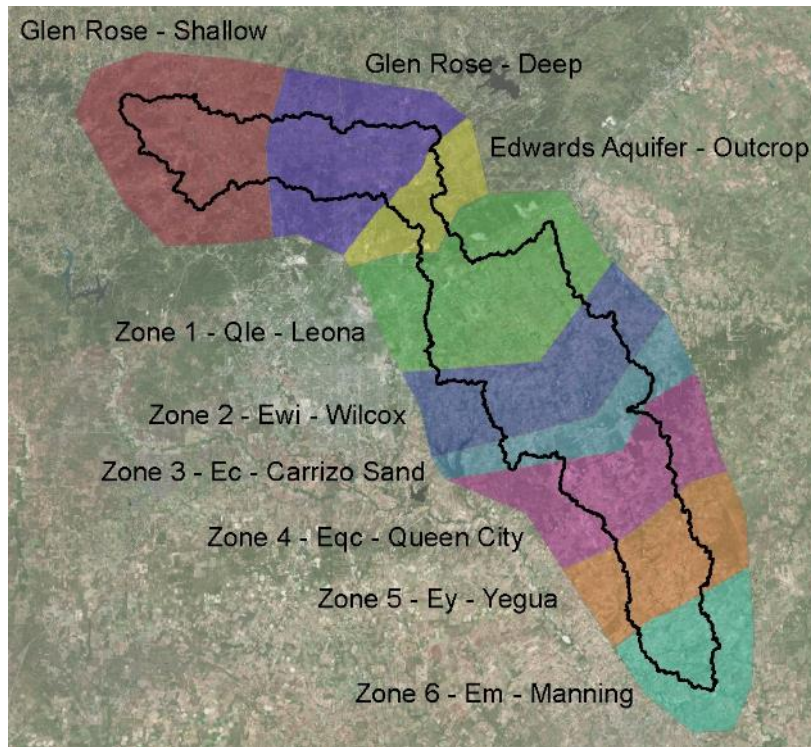


# Water Quality - Model



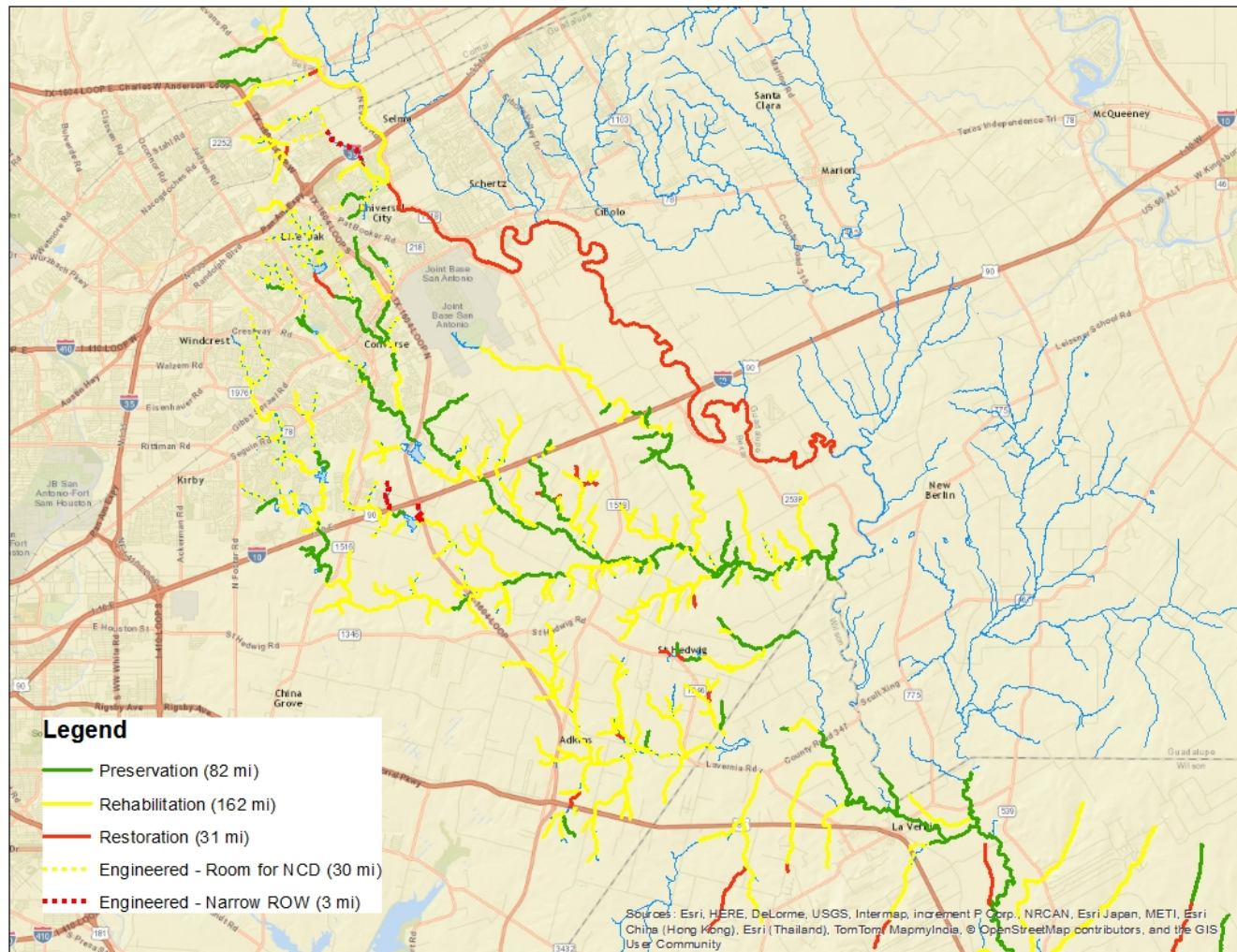


# Water Quality - Model



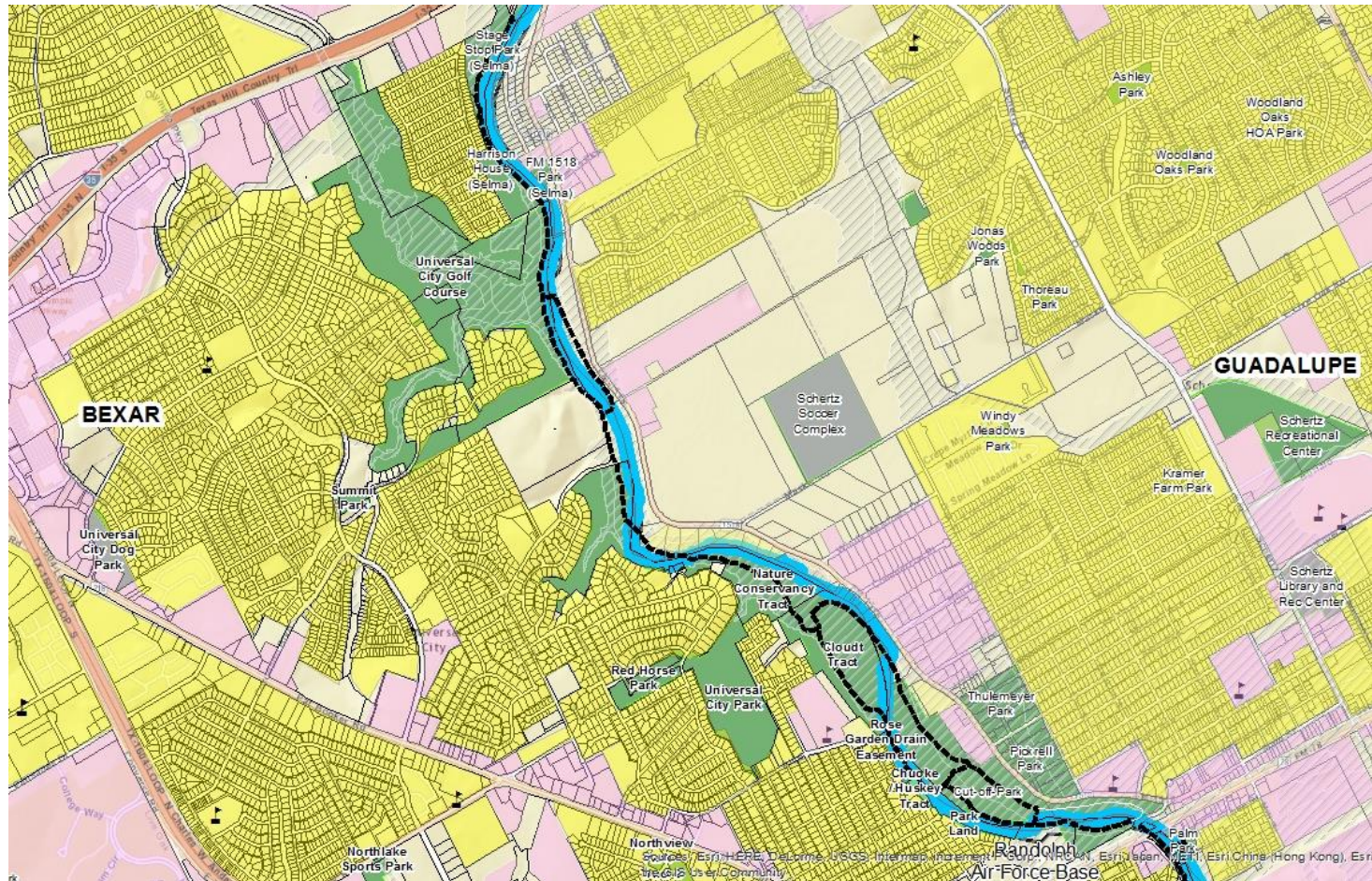


# Stream Restoration Potential





# Example Park/Trail Concept

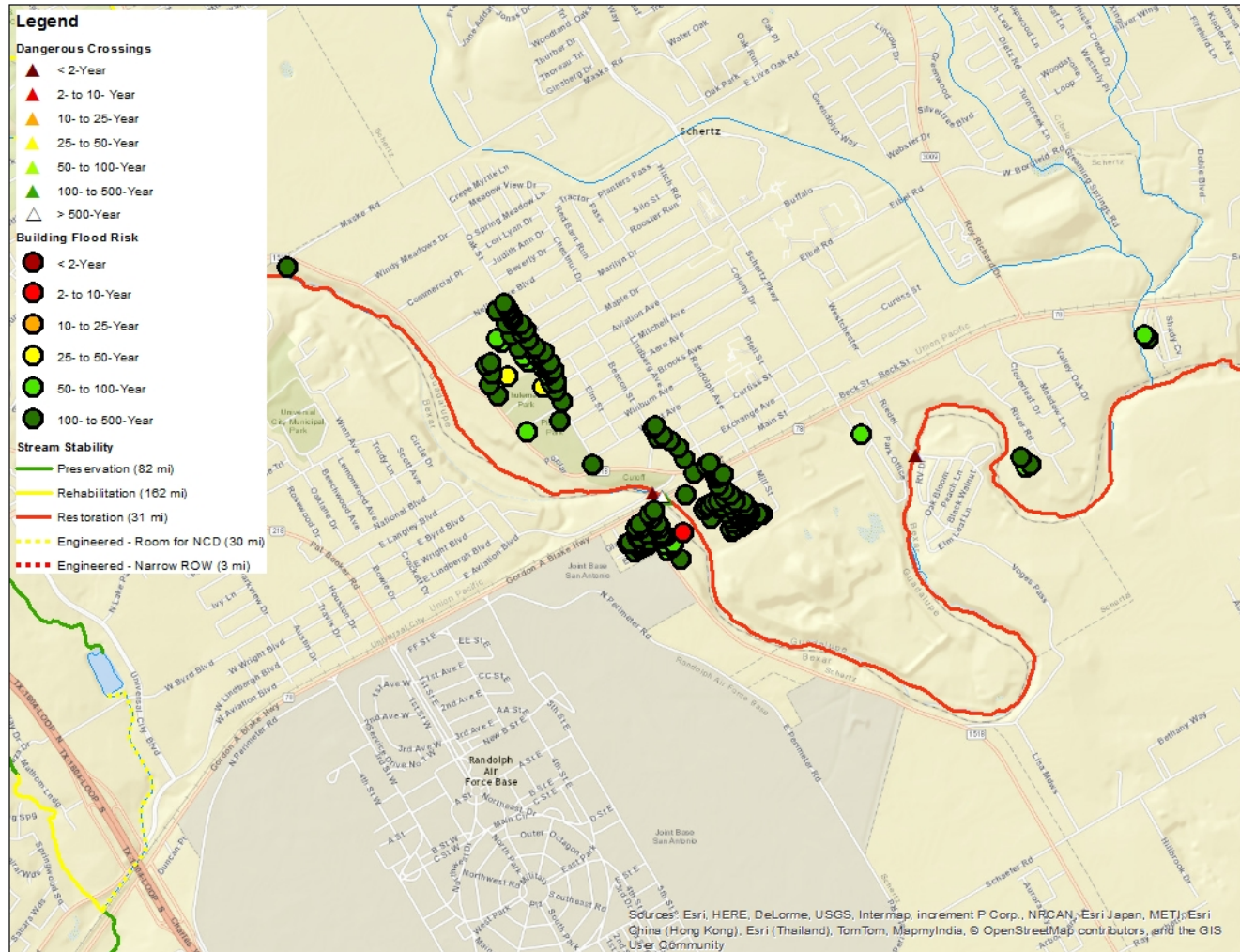


# Areas for Project Planning



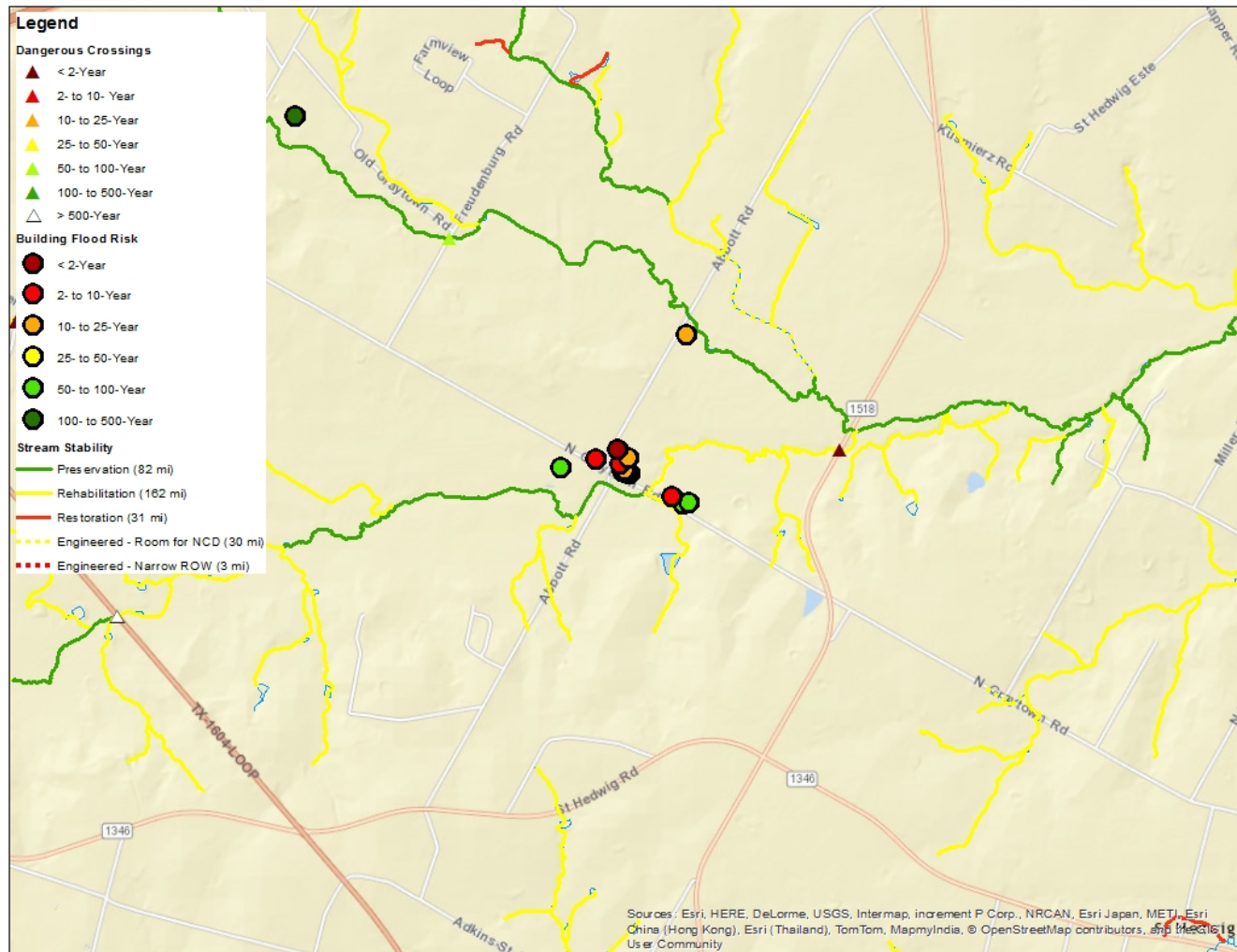


# Cutoff Park

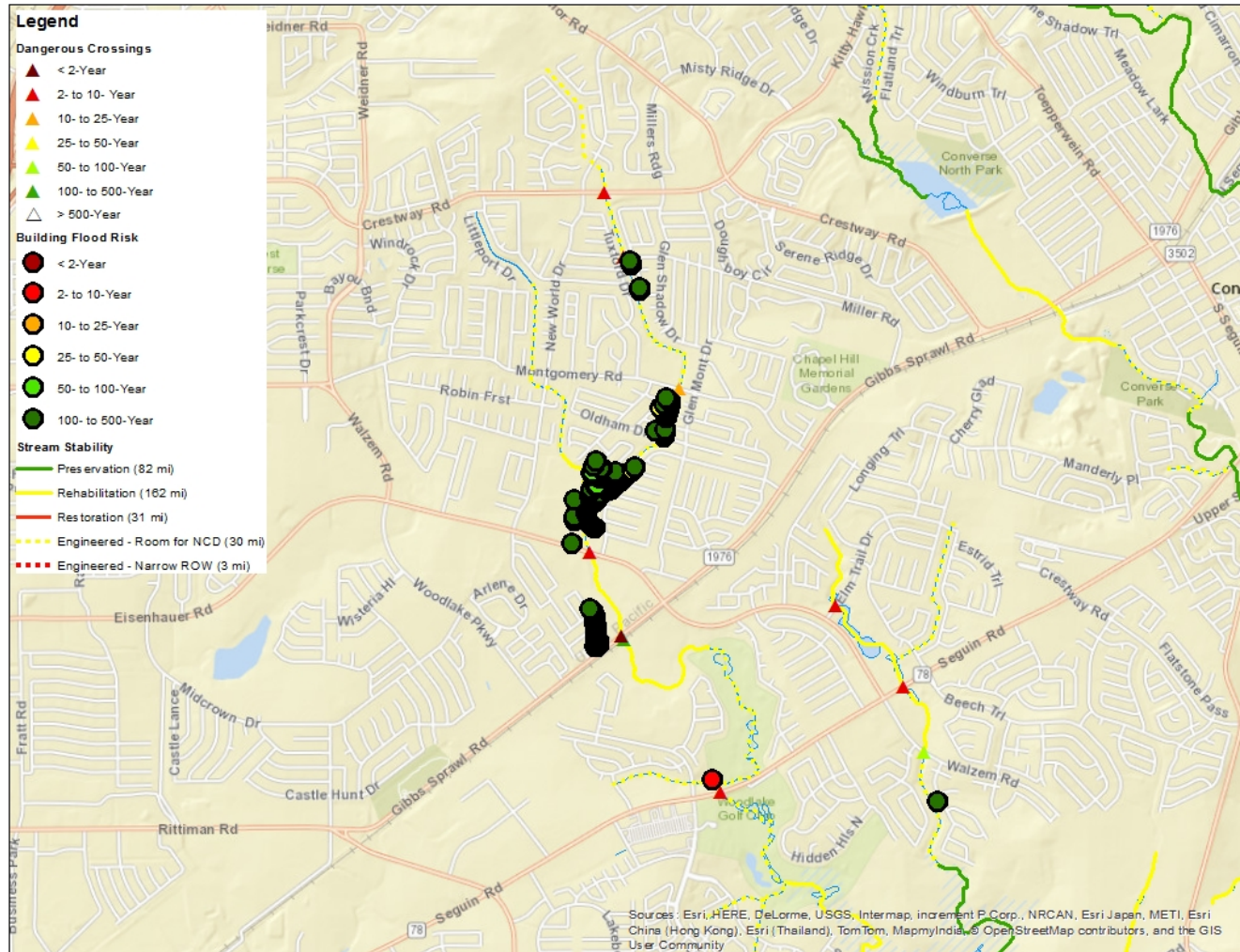




# Graytown Rd

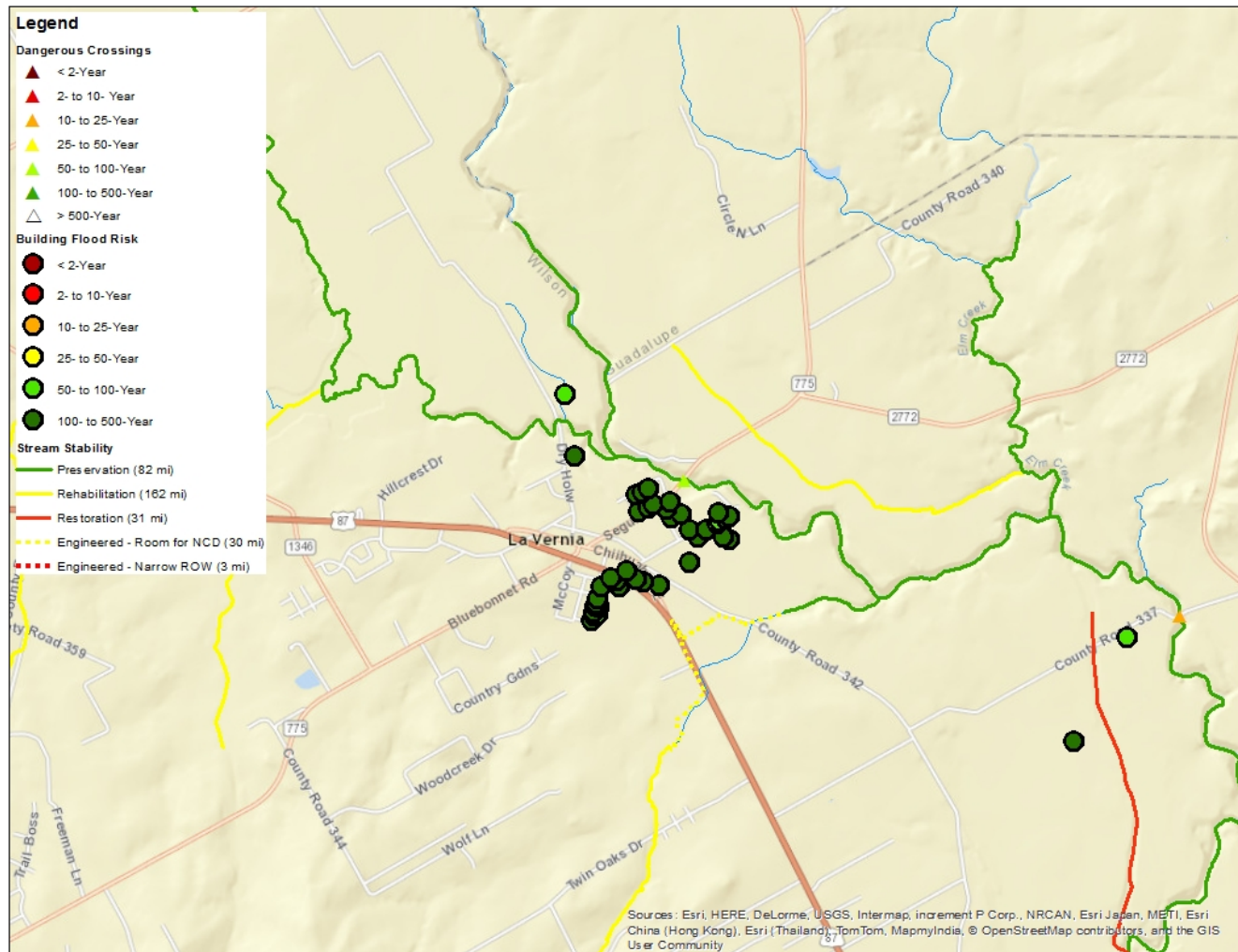


# Martinez Creek





# La Vernia



# Questions

Erin Cavazos  
Cibolo Creek  
Watershed Master Plan  
Project Manager  
210-227-1373  
ecavazos@sara-tx.org

Patty Carvajal  
SARA Mid/Lower Cibolo  
Creek WPP Project  
Manager  
210-227-1373  
pmcarvajal@sara-tx.org

